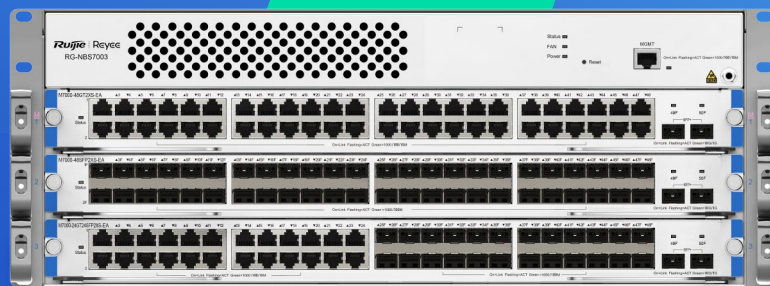


RG-NBS7003

Layer 3 Chassis Cloud Managed Switch

DATASHEET



Highlights

- Modular design provides scalability and flexibility
- High-level redundancy, ensuring nonstop service
- Whole network solution specially designed for SMB Scenarios
- Lifetime management on Ruijie Cloud at anytime anywhere

Highlight Features

RG-NBS7003 Reyee First Chassis Switch Designed for SMB

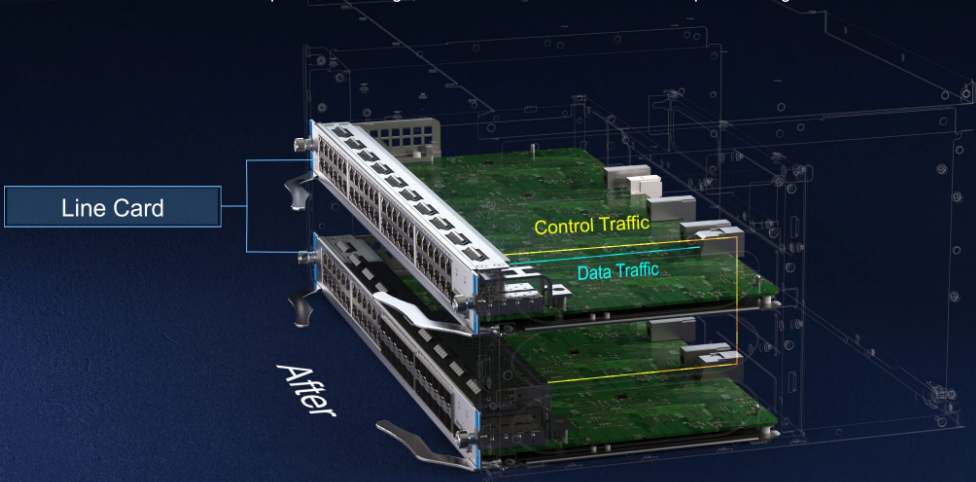


4 RU 3 Service Module
Chassis Core Switch

- 7 Optional Line Cards
- MAC 32,000 MAC Address
- ARP 8,000 ARP Table
- 480 Gbps Switching Capacity
- 360 Mpps Packet Forwarding Rate

Architecture Innovation: Higher Performance, Lower Cost

New traffic & chip-intensive design, each line card can be used as a supervisor engine module



Line Card

Control Traffic

Data Traffic

After

Modular Design: Scalability, and Flexibility

Support 7 types of line cards, up to 48 ports full 10 Gigabit



- M7000-8XS-EA
- M7000-48SFP2XS-EA
- M7000-48GT2XS-EA
- M7000-24GT2XS-EA
- M7000-16XS-EA
- M7000-24GT24SFP2XS-EA
- M7000-24SFP2XS-EA

Highlight Features

High-Level Redundancy, Ensuring Nonstop Service

Redundant Modules

Virtual Cluster Switching (VCS)

2 power slots: ensuring service continuity

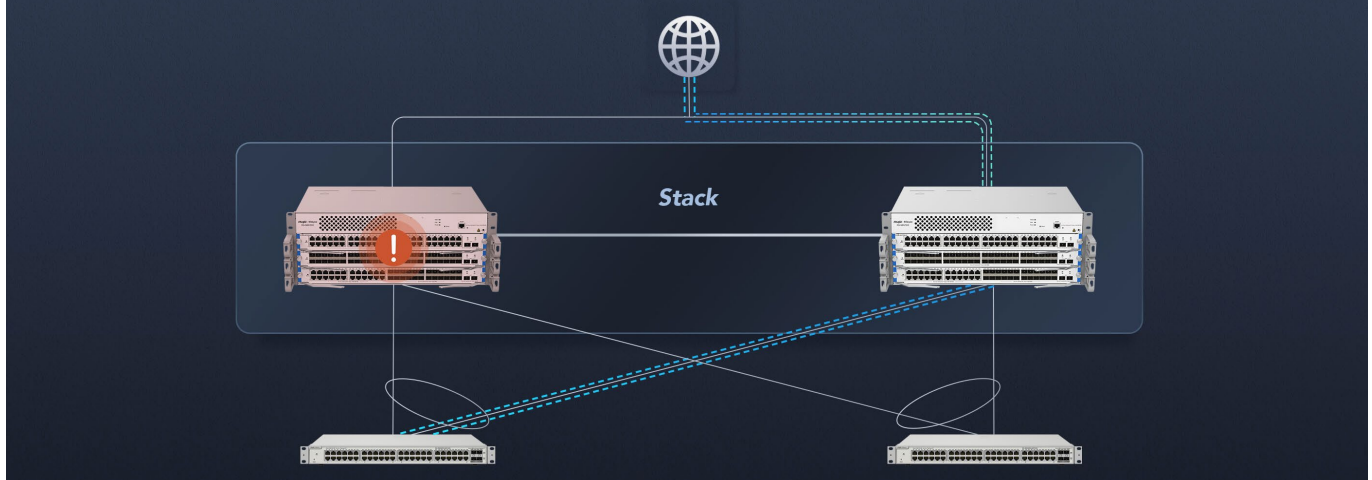


High-Level Redundancy, Ensuring Nonstop Service

Redundant Modules

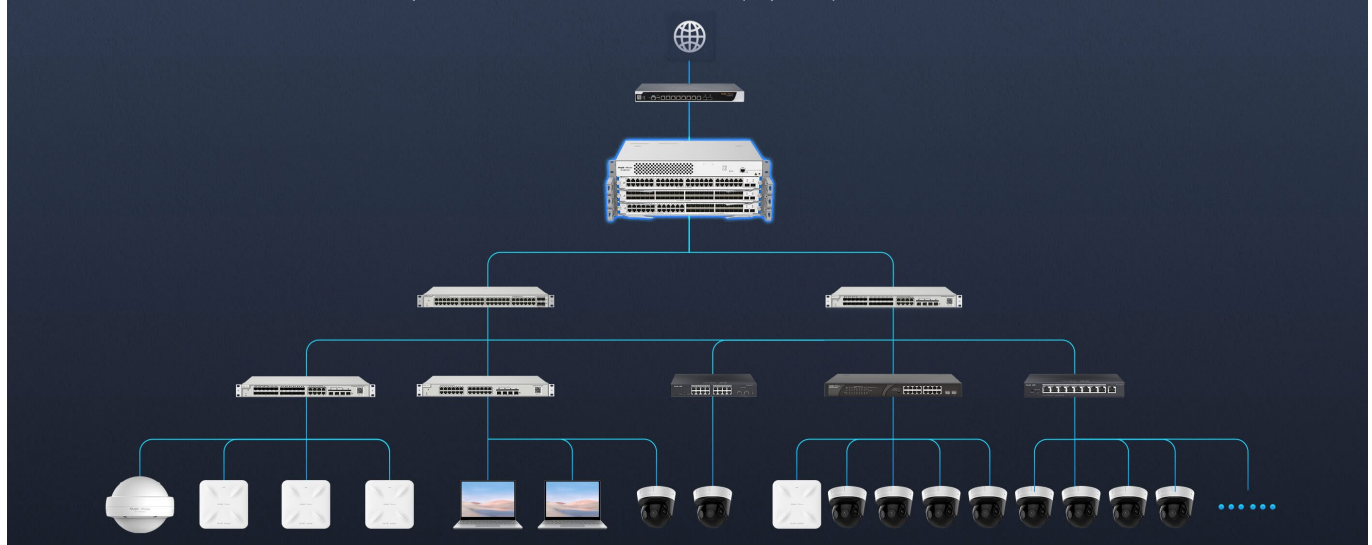
Virtual Cluster Switching (VCS)

Virtual Cluster Switching (VCS): service failover within seconds



Whole Network Solution Specially Designed for SMB Scenarios

Up to 2000 terminal devices or 1000 CCTV (2mp H.265) can be accessed



Highlight Features

Cloud, Make Your Business Easy

- SON, zero touch provisioning to Cloud
- Monitor switch statistics at anytime anywhere
- Configure VLANs on Ruijie Cloud APP
- Easy maintenance, save onsite time and cost



Specifications

Basic

Model	RG-NBS7003
10/100/1000Base-T ports	144 * 10/100/1000BASE-T ports (Maximum)
SFP ports	144* SFP ports (Maximum)
SFP+ ports	48* SFP+ ports (Maximum)
Layer Type	Layer 3
Switching capacity	480Gbps
Forwarding rate	360Mpps
Packet Buffer	16 Mbit
MAC address table	32,000
Maximum VLAN Support	4094
Dimensions (W x D x H)	442 mm x 313 mm x 175 mm 4U
Weight (With package)	9.6kg
MTBF	> 400,000
Warranty	5 Years

Layer 2 Features

Jumbo Frame	9216
Flow Control	✓
STP (IEEE 802.1d)	✓
RSTP (IEEE 802.1w)	✓
MSTP (IEEE 802.1s)	-
Port Fast	✓
BPDU Guard	✓

Specifications

Layer 2 Features

Model	RG-NBS7003
Errdisable Recovery	✓
Max. Aggregation Group	16
Max. Member per Group	8
Unknow Unicast Storm Suppression	✓
Multicast / Broadcast Storm Suppression	✓
Many-to-One Mirroring	✓
VLAN Range	1-4094
Port-based VLAN	✓
MAC-based VLAN	✓
IP-based VLAN	✓
Voice VLAN	✓
RLDP	✓
LLDP / LLDP-MED	✓
Cable Testing	✓
IGMP Snooping v1/v2/v3	✓

Software Features

Ping	✓
Traceroute	✓
ACL Entries	1900
Static Routing	✓
IP Standard ACL	✓

Specifications

Software Features

Model	RG-NBS7003
MAC-based Extended ACL	✓
IP-based Extended ACL	✓
Port-based Rate Limit (Ingress/Egress)	✓
SNMP v1/v2c/v3	✓
OSPF	✓
RIP	✓
IPv6	✓
SNMP	✓
802.1X	✓
DHCP Server	✓
Web Management	✓
Management IP	10.44.77.200
HTTP/HTTPS	✓
Cloud Management	✓
SON (Self-Organizing Network) with IP	✓
Camera Recognition	✓
Loop Prevention	✓
Loop Notification	✓
PoE Usage Alarm	-
Protection Port	✓
IP Source Guard	✓
Anti-ARP Spoofing	✓

Specifications

Software Features

Model	RG-NBS7003
DHCP Snooping	✓
DHCP Client	✓

Physical Features

Reset Button	rear
Cable Hot-swappable	✓
Power Supply Slot	2
Power Supplies	modular power supply
Power Consumption	≤ 50W
EEE	✓
Fan	1
Airflow	Left/right-to-Rear
Fan Adaptive Speed Adjustment	✓
Acoustic Noise	< 50dB
Operating Temperature	0°C to 50°C (32°F to 122°F)
Storage Temperature	-40°C to 70°C (-40°F to 158°F)
Operating Humidity	10% to 90% RH
Storage Humidity	5% to 95% RH
Port Surge	6 kV
Operating Altitude (meters)	-500 to 5000
Certificate	CE, RoHS

Power Supply and Fan

RG-PA300I-FS	RG-NBS7003 Power Module (support redundancy,AC, 300W)
RG-PA460I-FS	RG-NBS7003 Power Module (support redundancy,AC, 460W)
M7003-FAN	NBS7003-FAN

Line Card & Service Module

M7000-24GT2XS-EA	24 Gigabit Ethernet copper port (RJ45) + 2 10-gigabit Ethernet fiber port (SFP+,LC)
M7000-48GT2XS-EA	48 Gigabit Ethernet copper port (RJ45) + 2-port 10-gigabit Ethernet fiber port (SFP+,LC)
M7000-24SFP2XS-EA	24 Gigabit fiber port (SFP,LC) + 2 10-Gigabit Ethernet fiber port (SFP+,LC)
M7000-48SFP2XS-EA	48 Gigabit fiber port (SFP,LC) + 2 10-Gigabit Ethernet fiber port (SFP+,LC)
M7000-24GT24SFP2XS-EA	24 Gigabit Ethernet copper port (RJ45)+ 24 Gigabit fiber port (SFP,LC)+ 2 10-gigabit Ethernet fiber port (SFP+,LC)
M7000-8XS-EA	8 10-Gigabit Ethernet fiber port (SFP+,LC)
M7000-16XS-EA	16 10-gigabit Ethernet fiber port (SFP+,LC)

Package Contents

Device	RG-NBS7003
Mounting Bracket	2
Foot pad	4
Power supply	modular power supply
Quick Start Guide	1
Warranty Card	1
Accessories	Screws * 6
Package Weight	9.6 kg
Package Dimension (w x d x h)	442 mm x 313 mm x 175 mm 4U

Ruijie | Rcycc

 **Redefine your easy network**

Copyright ©2000-2023 Ruijie Networks Co., Ltd. All rights reserved.

No part of this document may be reproduced or transmitted in any form or any means without prior written consent of Ruijie Networks Co., Ltd.

Notice

This content is applicable only to regions outside the China mainland. Ruijie Networks Co., Ltd. reserves the right to interpret this content.

The information contained herein is subject to change without notice. Nothing herein should be construed as constituting an additional warranty. Ruijie Networks Co., Ltd. shall not be liable for technical or editorial errors or omissions contained herein.



Ruijie Networks Co., Ltd.
Building 19, Juyuanzhou Industrial Park, No.618
Jinshan Road, Cangshan District, Fuzhou, Fujian, China
Website: <https://www.ruijienetworks.com>