

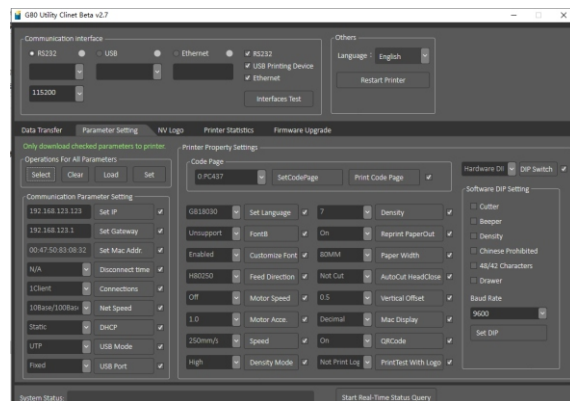
More stable, more cost-effective

80mm Thermal Receipt Printer

GA-E200



- ★ Three in one interface, 200~250mm/s print speed
- ★ Allow print density and speed to be fine-tuned
- ★ Multifunctional button and status indicator available

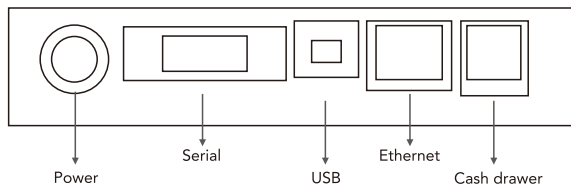


- ★ New utility to view print length, number of cuts and more
- ★ Allow users to upgrade printer firmware

Specification

Model	GA-E200
Print Method	Direct thermal
Print Speed	200~250mm/s
Paper Width	79.5±0.5mm
Print Width	64/72mm
Interface	Serial+USB+Ethernet
Reliability(Mechanism)	150km
Weight	1.05KG
Dimension	185×130×130mm(W×D×H)
Columns	Font A - 42columns or 48columns / Font B - 56columns or 64columns / Simplified/Traditional Chinese - 21columns or 24columns
Character Size	ANK Font Font A: 12×24dots Font B: 9×17dots Simplified/Traditional Chinese: 24×24dots
Code page	PC437/Katakana/PC850/PC860/PC863/PC865/West Europe/Greek/ Hebrew/East Europe/Iran/WPC1252/PC866/PC852/PC858/IranII /Latvian/ Arabic/PT151,1251/PC737/WPC1257/Thai Vietnam/PC864/PC1001/ (Latvian)/(PC1001)/(PT151,1251)/(WPC1257)/(PC864)/(Vietnam)/(Thai)
Barcode type	UPC-A/UPC-E/JAN13(EAN13)/JAN8(EAN8)CODE39/ITF/CODABAR/ CODE93/CODE128/QRCODE
Data	128K bytes
NV Flash	256K bytes
Cash drawer out	DC 24V/1A
Power adaptor	Input: AC 110V/220V, 50~60Hz Output: DC 24V/2.5A
Work environment	Temperature: 0~45°C, Humidity: 10~80%
Storage environment	Temperature: -10~60°C, Humidity: 10~90%

★ Interface Description



Gainscha Network Inc.

Tel: +86 756 3965698 Fax: +86 756 3965694 E-mail: sales@gainscha.com www.gainscha.com.tw | gainscha.com